



Company : Karoon Gas Pty Ltd
Well : Megascolides 1 Re-ST1
Interval : 1620.00 - 1946.40 meters
Created : 24/Dec/2006 4:59:29 AM



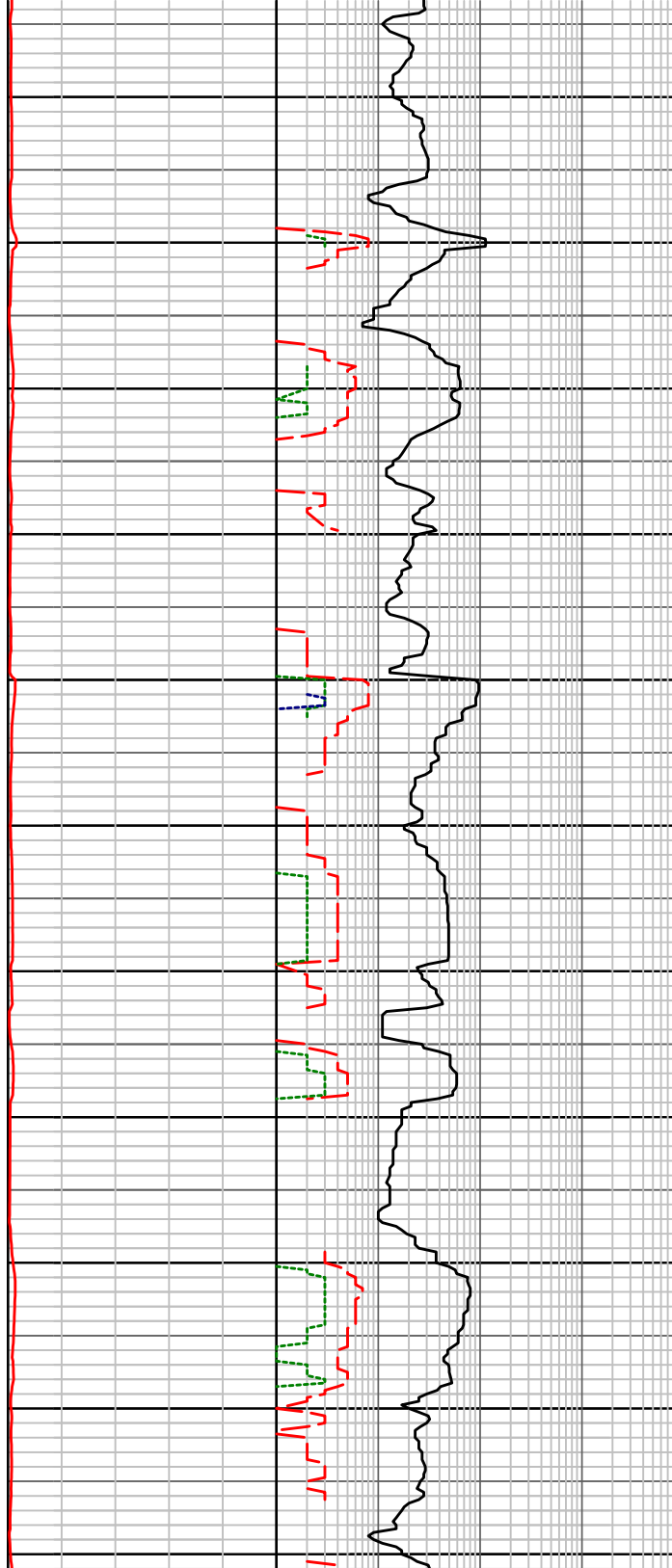
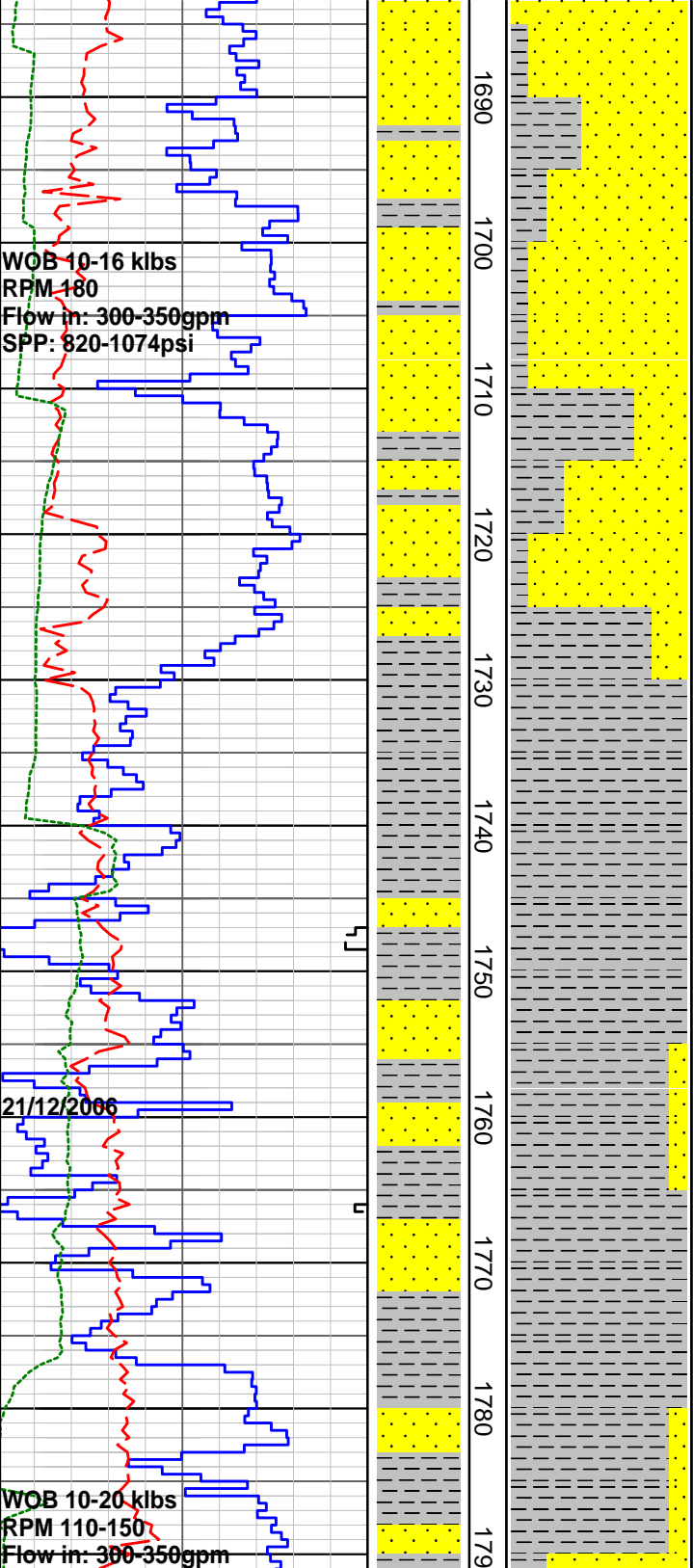
FORMATION EVALUATION LOG

RATE OF PENETRATION				INTERPRETED LITHOLOGY	MD meters 1:500	LITHOLOGY	CORE	OIL SHOWS	TOTAL GAS	CHROMATOGRAPH				REMARKS																																																																																																																																																																																																																																																																																																																																																																																																																																																																																																																																																																																																																																																																																																																																																																																																																																																																																																																																																																																																																																																																																																																																																																																																																																																																																																																																																					
ROP (0-50m/hr)										1	Methane ppm		10000																																																																																																																																																																																																																																																																																																																																																																																																																																																																																																																																																																																																																																																																																																																																																																																																																																																																																																																																																																																																																																																																																																																																																																																																																																																																																																																																																						
50	45	40	35							1	Ethane ppm		10000																																																																																																																																																																																																																																																																																																																																																																																																																																																																																																																																																																																																																																																																																																																																																																																																																																																																																																																																																																																																																																																																																																																																																																																																																																																																																																																																																						
Backup ROP (50-200m/hr)				1	Propane ppm		10000	TOTAL GAS		1	iso-Butane ppm		10000																																																																																																																																																																																																																																																																																																																																																																																																																																																																																																																																																																																																																																																																																																																																																																																																																																																																																																																																																																																																																																																																																																																																																																																																																																																																																																																																																						
200	185	170	155	1	n-Butane ppm		10000	% 0.1 0.2 0.3 0.4 0.5		1	iso-Pentane ppm		10000																																																																																																																																																																																																																																																																																																																																																																																																																																																																																																																																																																																																																																																																																																																																																																																																																																																																																																																																																																																																																																																																																																																																																																																																																																																																																																																																																						
WOB (klb)				1	n-Pentane ppm		10000			1			10000																																																																																																																																																																																																																																																																																																																																																																																																																																																																																																																																																																																																																																																																																																																																																																																																																																																																																																																																																																																																																																																																																																																																																																																																																																																																																																																																																						
TORQUE AVG				10			1000			1000			10000																																																																																																																																																																																																																																																																																																																																																																																																																																																																																																																																																																																																																																																																																																																																																																																																																																																																																																																																																																																																																																																																																																																																																																																																																																																																																																																																																						
5	10	15	20	5			10			5			50																																																																																																																																																																																																																																																																																																																																																																																																																																																																																																																																																																																																																																																																																																																																																																																																																																																																																																																																																																																																																																																																																																																																																																																																																																																																																																																																																						
5	10	15	20	5			10			5			50																																																																																																																																																																																																																																																																																																																																																																																																																																																																																																																																																																																																																																																																																																																																																																																																																																																																																																																																																																																																																																																																																																																																																																																																																																																																																																																																																						
RR1.3 SEC EBXSC15 3x20 jets In 1635m Out 1659m Drilled 24m, In 30.0 hrs 19/12/2006 WOB 8-10 klbs RPM 150 Flow in: 295-300gpm SPP: 650-750psi 20/12/2006 NB2 DBSFM3553 5x11 jets In 1659m Out 1881m Drilled 222m, In 14.4 hrs					20																																																																																																																																																																																																																																																																																																																																																																																																																																																																																																																																																																																																																																																																																																																																																																																																																																																																																																																																																																																																																																																																																																																																																																																																																																																																																																																																																														

WOB 10-16 klbs
RPM 180
Flow in: 300-350gpm
SPP: 820-1074psi

21/12/2006

WOB 10-20 klbs
RPM 110-150
Flow in: 300-350gpm



gr, tr qtz gr, tr rd brn lith, tr blk coa detri, comm crystalline calc vn infill, hd, n vis por, n oil fluor

Fluorescence: The calcite vn infill (tr of total sample) has 50% bright patchy to solid lt to med ylw oil fluor giving a dull ylw wh crush cut fluor with tr ylw wh tr residue

MWIN: 9.35ppg Mud temp: 46deg
PV/YP: 20/11 FV: 52 Gels: 1/2
Solids: 5.9% pH: 12.5

Sandstone: lt-med gn gy, v f-f, dom f, sbang-rnnd, mod srtd, abund off wh arg mtx, strng sil & mod calc cmt, abund off wh alt feld gr, com alt gy gn volc lith gr, tr qtz gr, tr rd coal detri, tr xtaline Calc vn infil, hd, n vis por, n oi fluor

Claystone: med dk brn gy-med gn gy-dk gy, sli-v slty, v f aren w alt feld gr i/p, v carb i/p, tr blk carb flks, tr blk coal detri, tr micmic, tr Calc lined fractures, hd sbfiss

Survey @ 1748m = 4deg

1760-1765m: Fluorescence: The vn infill mat (1% of total sample) has tr bright patchy- solid lt-med ylw oil fluor giving dull ylw wh crush cut fluor with tr ylw wh film residue

Claystone: med-dk gy-med brn gy-med gn gy, sli-v slty, v f aren w alt feld gr i/p, occ v carb, tr blk carb flks, tr blk coal detri, tr micmic, com Calc & goethite lined fractures,

Sandstone: lt-med gn gy, v f-f, dom f, sbang-rnnd, mod srtd, abund off wh arg mtx, strng sil & mod calc cmt, abund off wh alt feld gr, com alt gy gr

